

# TENVILLAGE NEWS

COMMUNITY MAGAZINE

MAY 2020

DIGITAL ISSUE 1

## CODDENHAM EDITION

### NATURE

## NATURE NOTES

We can stay safe and see  
such a lot

PAGE 4

### COMMUNITY

## A FOND FAREWELL

Helen Wyles - three generations  
in Coddendam

PAGE 7

### NEWS

## COMMUNITY SHOP

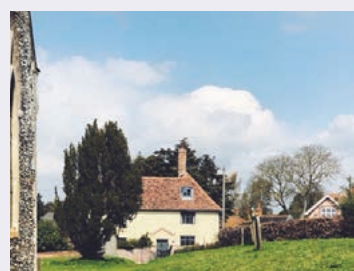
Continuing to support  
our community

PAGE 9





## CONTENTS

**EDITORS**

Andrew MacPherson  
Colin Hardy

**DESIGN**

Byte Design: Paul Taylor

**DIRECTION**

Andrew MacPherson

**PHOTOGRAPHY**

Georgie Kerr

**COVER IMAGE**

Colin Hardy

Other photography  
© respective sources

# Welcome to the Coddensham Digital Edition of the **TEN VILLAGE NEWS**

Created in conjunction with local contributors and editorial team, it's a temporary solution while the COVID19 'lockdown' prevents the distribution of the 10VN in its entirety.

The publication platform is kindly provided by the Coddensham COVID19 Response Group, as part of a number of voluntary services and channels for the Coddensham Parish during these difficult times.

We hope this edition helps fill a gap in your monthly reading and gives voice to the regular contributors who work hard to entertain and inform.

Of course, if you know of someone who doesn't have internet access, please print off a copy and share, subject to current social distancing guidelines.

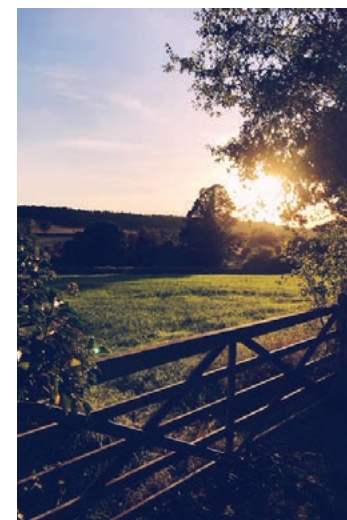
We hope this publication will continue to be issued the first of every month, until such time normal service is resumed.

In the meantime, do please send your contributions and news to **Colin Hardy**, via [colin63360@btinternet.com](mailto:colin63360@btinternet.com) by the 24th, to appear the following month.

**Thank you**

The Editors

Coddensham Digital Edition - Ten Village News



**ABOVE**  
AONB Coddensham

**OVERLEAF TOP**  
St Marys Church at sunset

**OVERLEAF LEFT**  
Manor Farm House

**NATURE NOTES****4**

Brenda Hudson's regular round up

**SPADEWORK****5**

Ian Jeffrey takes a look at gardening challenges and opportunities

**HISTORY RECORDER****6**

John Pelling's monthly musings

**HELEN WYLES****7**

Reflections on a much loved resident

**CODDENHAM HISTORY CLUB****8**

An update

**CO-OP TOKEN SCHEME****8**

Local Success

**CODDENHAM PARISH COUNCIL****8**

Vacancies

**NEWS FROM THE TEN VILLAGES****8**

Update from Stonham Aspel

**ST MARY'S CHURCH****8**

All online

**CODDENHAM COMMUNITY SHOP****9**

Teams with Waitrose

**MP'S MESSAGE****9**

A regular feature from our local MP

**THE CODDENHAM CENTRE****10**

Latest News

We have put this version together with the kind permission of Andrea Turner and Tim Thomas of Ten Village News.

Thank you to all contributors. We welcome more, plus your feedback and comments through [www.coddensham-parish.uk](http://www.coddensham-parish.uk)



By Brenda Hudson

# NATURE NOTES

While we are confined in these difficult times there has been an interesting spin off, as we are all narrowing our observations of wildlife, and are fortunate to live in an area where there is so much to see from gardens and on short walks.



We are not able to walk the butterfly transect round Manor Farm but there have been so many butterflies in our gardens during the warm spells, this makes up for it. Many groups of Peacocks have been the most prolific and Brimstones were about early. The odd Commas have been noticed and recently a large number of individual male Orange Tips are frequently seen.

While we were watching the Rooks weaving their nests in the rookery in New Close plantation, an observer had spotted the first Swallow they had seen in the area round the

church and Crown Corner. This was on 5th April, which was 5 days earlier than they had seen one last year. It was joined shortly by a fellow. Also one has visited the field behind the High Street round stables where, perhaps, the same one had nested in past years. A few days later a group of House Martins joined the Swallows round Crown Corner. Large groups of Buzzards soar over the lawns area and below Broom hill. Also in the field below the grassland on Broom Hill a Barn Owl is frequently flying low over this field perhaps looking for the voles which have been gnawing the Spindle bushes in the hedge!

Spectacular displays of flowers have come early. Cowslips in the churchyard quite over shadowing the stumpy little Field Wood rush growing around there. The Bluebells were going to be as good as ever and on a hot day will give off a delicate scent.

With so much less traffic, groups of deer are seen near and in the village. A family taking their permitted walk on the path from Rectory Road to Bulls Road saw the horns of a group of Fallow deer, less common round here, sticking up in the middle of a field of oil seed rape. Let us hope they stay off the roads.

**We can stay safe and see such a lot.**

## SPADEWORK



Potato planting is an annual ritual. The tubers are chitted to begin with, placed in the light to encourage new shoots. Some of the weaker shoots are removed to leave 3 or 4 strong stems. Some potatoes, such as the maincrop salad potato Pink Fir Apple, refuse to comply – so you plant them as they are – or so I was told by the receptionist at the suppliers Jamieson of Annan. It is best to leave 2 ft. or so between the rows and 1 ft. between each tuber. The rows are spaced to allow for earthing up into ridges, usually done with a draw hoe. This is to keep the new tubers from the

effects of light. Green potatoes are inedible, poisonous even. Potatoes are sub-divided into earlies, second earlies and maincrop. They are sensitive plants, prone to diseases such as scab. The worst thing that can happen to your crop is that it catches blight, usually passed on by outdoor tomatoes. Blight turns the leaves black and rots the tubers. You should also watch out for wireworms, which are often found in grass roots in recently turned ground. Wireworms, small orange borers, penetrate the skin and leave an obnoxious taste. Potatoes prefer light sandy soil, such as we have here. Although seen as commonplace or routine vegetables, many potatoes are delicately flavoured. Most cooking procedures, in my experience, mute their flavours. Floury potatoes suffer most, especially if overcooked – which reduces them to paste. The answer to this problem is to part-cook potatoes you know to be floury, take them off the heat and add cold water to reduce the temperature. Then pour this off and finish the cooking on a low heat in a dry pan. This would probably have been easy enough on old style kitchen ranges

and on open fires. Jane Grigson mentions this method in one of her recipe books, and I imagine it was an old country way. This year I bought some well-known earlies, called Home Guard and Red Duke of York. My grandfather, who was a shepherd in the foothills of the Cheviots planted these varieties in the 1940s and I imagined that they were traditional, but found that both were introduced in 1942. In those days potato crops were preserved in clamps, shallow excavations lined



with straw and covered with soil. This kept a steady temperature frost-free through the winter and into the new year. In those days we also grew a small nameless blue-skinned potato, a species plant as brought from America, it seemed to me, rather than a later variety.

**By Ian Jeffrey**

## Garden waste service suspended until further notice

We ask that you please compost your garden waste at home, or if that's not possible, please store it in your garden until we can get this service back up and running again.

Please do not place this waste in your general rubbish bin. We will not be invoicing for garden waste during this stoppage period, and subscriptions will be amended to compensate.

Although occasional bonfires aren't against the law, we would always encourage residents to be considerate of others and find alternatives ways to dispose of their waste, such as composting, in addition to looking at ways to reduce waste or storing recyclables and non-toxic waste temporarily. Particularly at this time, as COVID-19 can cause respiratory issues.

**Mid Suffolk District Council**



# HISTORY RECORDER

History is made  
day by day

By John Pelling

01449 760676 johnpelling@john-lewis.com

Covid-19 has driven home awareness that history is not necessarily big events happening by decade or by century but small matters made day by day. "An everyday story of country folk" has been left a month behind in its narrative. The Crown will not tell of the Prince of Wales or prime minister having to self-isolate for long after the virus has been overcome.

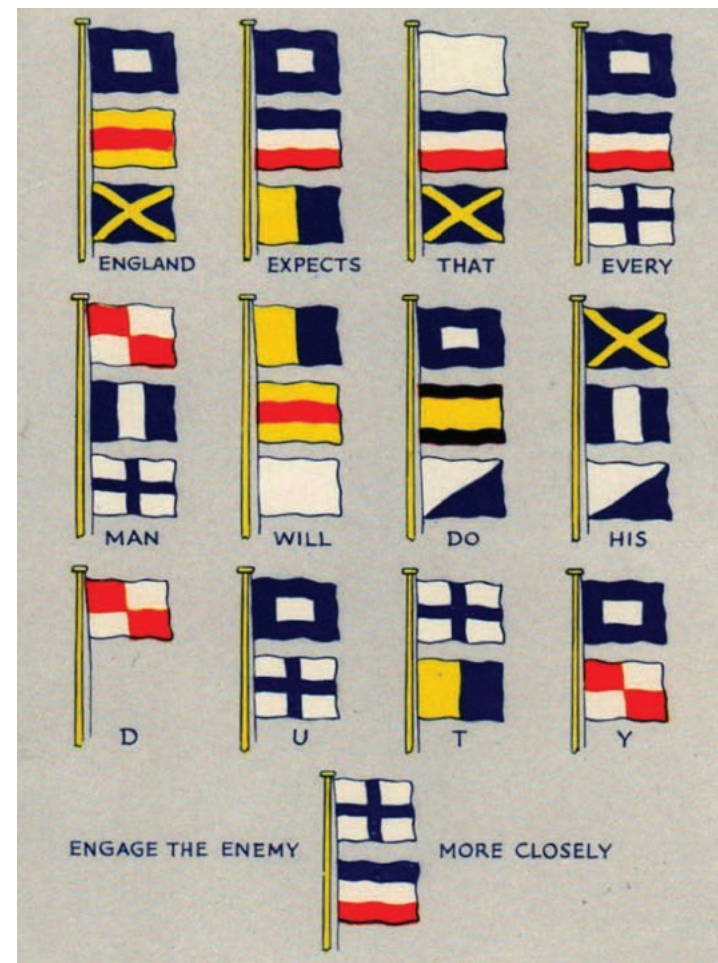
The Coddendam COVID-19 Response Group, quickly set up and active, is working day-by-day history. It will take its place in records of the future with contingency plans for the two world wars and the nuclear threat but, if parish council minutes are any guide, with much more detail. Already people in the parish have good reason to feel supported.

Deliveries from the Community Shop and The Highwayman, from just outside the village, are examples. The Telephone Tree and on-line fitness programmes offer more support. We also have our gardens and the daily exercise opportunity in the local countryside.

Beneath these, but only in the sense of underpinning not inferiority, and as they are private or confidential, everyone will be aware of acts of kindness and offers of help from neighbour to neighbour.

We hear many comments about this being a war. At its end there may well be an evocation of Churchill's speech of eighty years ago citing the 'few', this time with reference to NHS and

care staff, not to ignore transport, delivery and collection workers. At our level, isolated inland as the fleet was at sea, we may apply Nelson's intended signal, too complex to send before Trafalgar. In local terms and adapted for gender-neutrality, it is Coddendam confides that everyone will do their duty.



It really doesn't seem that long ago since Helen was part of most of our daily lives. Whether it was knocking at your door late at night to let you know that your milk was on the doorstep, or rounding people up to perform in the next play or concert she was preparing.

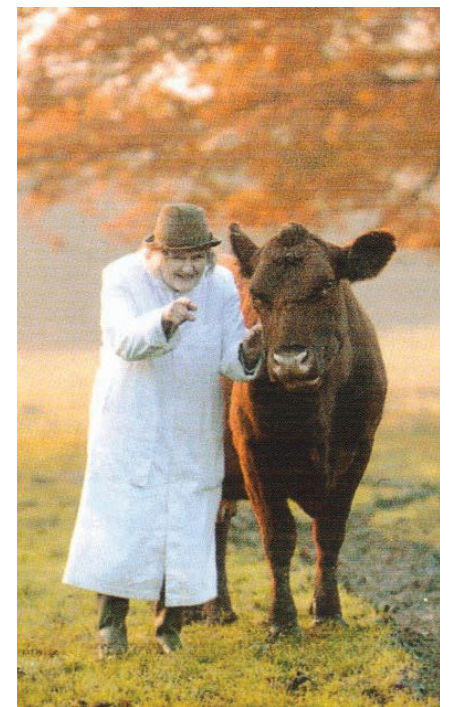
She was born at Manor Farm to Christopher and Clarissa Wyles and was the grand daughter to the Rev. Walter Wyles, Vicar of this parish 1890-1930. Her love of music led her to singing lessons with Ursula Nettleship and then to "Master Classes in Singing" at U.V.A with the late Sir Peter Pears. In 1949 she founded the "Coddendam Players", for children and adults to perform pantomimes, concerts, pageants and short plays etc., here in the village.

From 1947 she worked alongside her father with the milking herd of Red Poll cattle.

Her father died in 1972 and she carried on in partnership with her mother, who died in 1983. Two years later the equipment for pasteurisation was installed, to process whole milk, skimmed milk and cream, to be sold locally until 2012.

Her dual aims in life had always been for the preservation of the Red Poll cattle and conservation of the landscape, flora and fauna.

Helen went to the nursing home in Winesham in 2014, always talkative and bright. She faded away and died peacefully. That old brown hat will be well remembered.



By Sylvia Bickers

## Helen Wyles

29 July 1927-2 April 2020



ABOVE: Helen Wyles, and above right with one of her Red Poll cattle

Helen Wyles was a councillor in Coddendam for many decades. She had a unique style of contribution which often involved subjects seemingly not related to the agenda item and at times I did wonder if some of the 'Vicar of Dibley' parish council sequences were based upon observations made of Helen at Coddendam meetings. On one memorable occasion after the millennium the council was discussing putting a new bench on 'Three Cocked Hat' and Helen commented that the last one had been vandalised and so we should not spend money on a new one.

By Donald Burton

This comment was met with blank stares from other councillors and when pressed Helen explained that a group of boys had broken the previous seat just prior to World War 2. Helen always had the best interests of Coddendam at heart and was very generous with access to her land at Manor Farm, including a set of permissive paths for walkers to enjoy.

**Donald Burton**  
**Chair Coddendam PC**  
Wandering Weed Cottage  
LimeKilns, Coddendam  
Ipswich IP6 9UB  
W 01449 706566  
M 07958 477796



## NEWS FROM THE OTHER TEN VILLAGES

Elizabeth Ince, Stonham Aspal, has put Coddenham's webpage details on the pew sheet which will go out for this Sunday so that anyone who wants to read the Coddenham information knows where to access it. She is also happy for any individuals to be added to her email circulation list in which she distributes news.

**Please contact Elizabeth Ince:**  
lizandjohnince@gmail.com

If any other of the Ten Villages would like to share their information in this way, we are glad to include contact details in future magazines. Please send details to:

**Colin Hardy**  
colin63360@btinternet.com

## ST MARY'S CHURCH



The church is closed, but please go to [www.coddenham-parish.uk](http://www.coddenham-parish.uk) for the latest online service information, weekly Pew Sheet downloads and reflections.

# CO-OP COMMUNITY TOKEN SCHEME

I just wanted to say a big THANK YOU to anyone who contributed to the Co-op Community Token Scheme in the two Needham Market and one Barham Co-ops over the last three months for the benefit of SARS (Suffolk Accident Rescue Service). From the £1000 available to the three charities we were able to secure £500 which, at this very difficult time, will prove invaluable.

COVID-19 For your information, SARS has had to buy additional PPE to protect the welfare of our clinicians and the patients they treat. All our resources are involved in combating the outbreak - be it

our doctors working in hospitals, our paramedics responding on ambulances, etc. However, other emergencies are also still happening and these patients also need help, and at the moment SARS is still managing to operate a volunteer pre-hospital critical care response, with our clinicians still booking on to help treat these patients thereby supporting the NHS in this very challenging environment.

**Never has this £500 been more appreciated.**

Many thanks.

**Sue Groom**  
Volunteer Fund-raiser, SARS

## CODDENHAM HISTORY CLUB

The 2020 programme of events and talks are temporary suspended during the COVID-19 lockdown.

Some exciting work is however starting on the digitisation of our records, with a view to making use of a future parish website.

In the meantime, we are keeping members informed by email and through [www.coddenham-parish.uk](http://www.coddenham-parish.uk)

**Ray Collins**  
Chairman  
The Coddenham History Club

## COUNCILLOR VACANCIES

**Coddenham has three vacancies for parish councillors.**

The minimum age is 18 and you must live or work in Coddenham parish. It would balance representation if there were younger councillors.

If you would like to be considered for co-option on the council please contact the clerk for more information.

**clerk.coddenhampc@gmail.com**  
07548 152181.

# MPs MESSAGE



By Dr Dan Poulter MP

**A**s I sit to write this month's article, we find ourselves living in incredibly challenging circumstances. Never in peacetime has a Prime Minister or his Government been faced with such difficult decisions. From the very beginning of this crisis, our Prime Minister and Government have been led by the advice of our world-leading scientists.

We all need to recognise that our NHS, like any other health service, has only a limited number of doctors, nurses and specialist equipment. So, the more people who become sick at any one time, the harder it is for the NHS to cope. This is why it is so important to delay the spread of the disease and reduce the number of people needing hospital treatment at any one time.

I really cannot stress enough the importance of our Prime Minister's message to Stay At Home, Protect Our NHS and Save Lives.

Here in Suffolk, we have a great track record of coming together to help those in need and to support each other and I'm pleased to be able to share details of a new Suffolk-based community service supporting those in need during the COVID-19 outbreak. Called "Home, but not alone" the service connects people who want to volunteer in their communities with neighbours who are most in need. Volunteers can sign

up via a free app, Tribe Volunteer and the phone number for those in need of genuine help is 0800 876 6926. Lines will be staffed from 9am to 5pm 7 days a week.

I would like to personally pay tribute to all our outstanding NHS staff working tirelessly around the clock, in incredibly challenging circumstances, caring for those not only affected by COVID 19, but also who are still needing care under normal circumstances. I would also like to put on record my thanks to our local council staff, our teachers and school workers, police, transport workers and everyone doing their bit in our communities to help and look out for each other. I am incredibly proud of everyone rising to the challenge and helping to support those in need in our communities.

These are unprecedented times in our generation and I also know that a great many of you will be worried about your jobs, our schools and money. I'm doing my very best to keep my website up to date with helpful and current information, so please do check there if you have any queries – [www.drdanielpoulter.com](http://www.drdanielpoulter.com)

By the time this article goes to press and finds its way to you, matters may well have progressed further, but the best advice I can offer is stay at home, help to protect our NHS, help to stop the spread of COVID-19 and save lives.



## CODDENHAM COMMUNITY SHOP

Although the shop was closed for two weeks, we were very aware that this could cause difficulties at this time for some of our customers. Fortunately, we were able to link with the Waitrose Community Fund, via the Ipswich branch. They very kindly donated 12 care packages containing essentials which were delivered to a number of older members of our community who had been relying on the Community Shop during recent weeks. We are very grateful to Gemma and her colleagues at Waitrose Ipswich for their kind donations.

Luckily, the shop has now reopened for orders, collections and deliveries and we look forward, to serving the community once again.





# THE CoddENHAM CENTRE

By the Chair:  
The CoddENHAM Centre  
Charitable Incorporated Organisation

Following the latest government guidelines in respect of the current lockdown in response to the Coronavirus pandemic, the CoddENHAM Centre remains closed, except for essential access.

We will continue to keep customers and stakeholders advised through these bulletins, on this website [www.thecoddENHAMcentre.co.uk](http://www.thecoddENHAMcentre.co.uk) and the new site [www.coddENHAM-parish.uk](http://www.coddENHAM-parish.uk), established with the help of the Trust for the community's response to Covid19.

The Charity has kept busy and like many, has made use of the available time where it can.

The Centre Manager **Gail Springett**, meets weekly with the chairman and treasurer of the trust to consider essential maintenance matters oversight. The Trust Board continues to meet monthly, all are conducted via videoconferencing.

**Charmiane Hall** responsible for Centre Care has used this time to study and pass an online course on the Control of Substances Hazardous to Health Regulations (COSHH). We are working with the Centre team to install additional hand sanitisers, in readiness for 're-opening'.

In conjunction with **Creative Arts East**, we offered streaming links for the movie 'The Suffragettes' and, a recording of the play

'Little Bevan' performed by the Pentabus Theatre Company In Norfolk last year. All details are on our website.

We used our resources this month to help publish this digital 'CoddENHAM Edition' of the **Ten Village News**, in conjunction with its local contributors and co-ordinators. Longer term, we are working towards a new website for the whole community, kindly supported by our local charities. More details will follow. We continued our constructive dialogue with **Active Suffolk** in respect of

**BELOW**  
We look forward to restarting our sell out Nordic Walking classes



**ABOVE**  
Our tennis courts, outdoor gym and basket ball court and bowling area, await your use in better times

supporting day-time indoor bowls in the future, to complement that supplied until lockdown, by the **Great Blakenham Carpet Bowls Club**. We are also looking at further Nordic Walking training, once we are able to complete the current course on our return to business. With that in mind, we are planning a 'relaunch' of the Centre, once the current crisis is behind us. This may need to be phased, but we want to be ready to support our customers in getting back on their feet as quickly as possible.

We continue to research funding opportunities to develop our facilities and assist in dealing

with the impact of Covid19. The Charity is represented on the CoddENHAM Covid19 Response Group.

With summer well and truly here (?), we have one eye on the growing grass, particularly on the recreation ground. Our cutting contract with CoddENHAM Parish Council unexpectedly came to an end just before the lockdown and we are in the process of tendering for a new agreement. This has proved difficult, so the welcome offer of volunteer **Matt Hurst** in cutting the recreation ground, was a great help.

Finally, after twelve months, our Trustee and Trust Secretary **Angela Thompson** leaves us this month as part of a planned reduction in her voluntary portfolio. Full details can be found at [www.thecoddENHAMcentre.co.uk](http://www.thecoddENHAMcentre.co.uk) trustee-angela-thompson-steps-down. We are indebted to Angela for her support which apart from helping establish our governance structure last year has included bar duties and even performing on stage at the Centre!

As usual, if there are any questions or enquiries, please do not hesitate to contact the CoddENHAM Centre on the usual number or email address.

**Right**  
The grounds have been maintained thanks to volunteer help



Produced voluntarily for the Coddendam Community,  
every month until further notice.

Design ©2020 A MacPherson & P Taylor

ADM/PT/12516/28/4/20